

Lord Dundreary. A messy old man suit and tie. Side burns, big mustache, monocle.

Ned
1960s prep



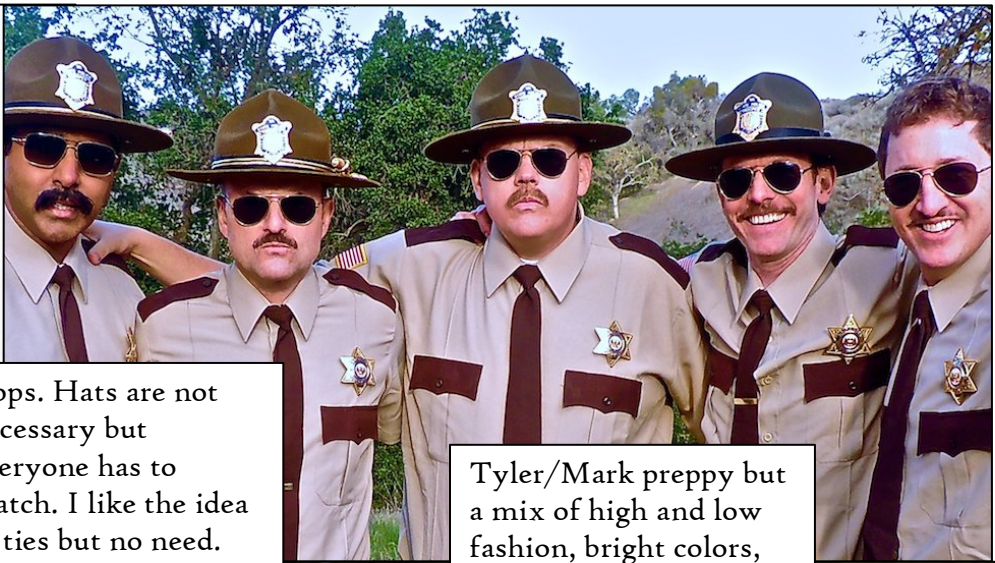
Ed
Intellectual
casual



Asa
Country
But not
sloppy.

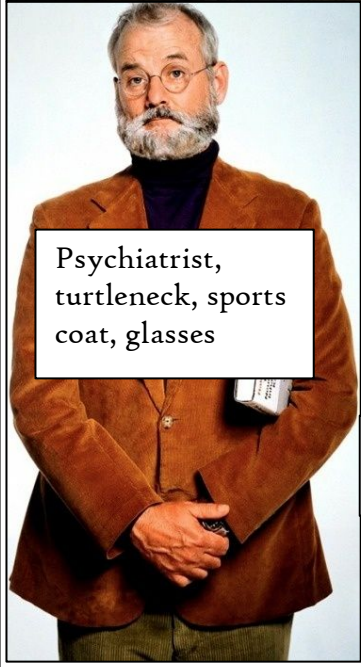


Sarah/Peaceflower
Punk rock, black
tough



Cops. Hats are not
necessary but
everyone has to
match. I like the idea
of ties but no need.

Tyler/Mark preppy but
a mix of high and low
fashion, bright colors,
slacks/ sneakers



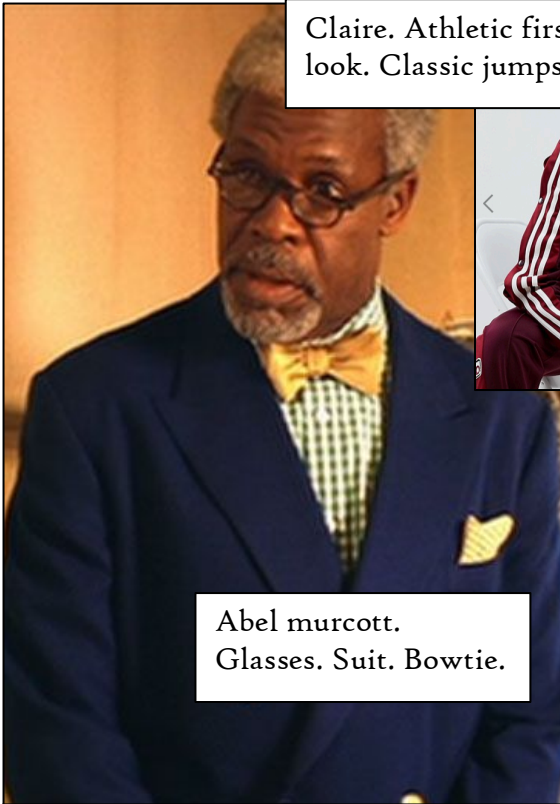
Psychiatrist,
turtleneck, sports
coat, glasses



FRANK
Robe, shorts, flip flops

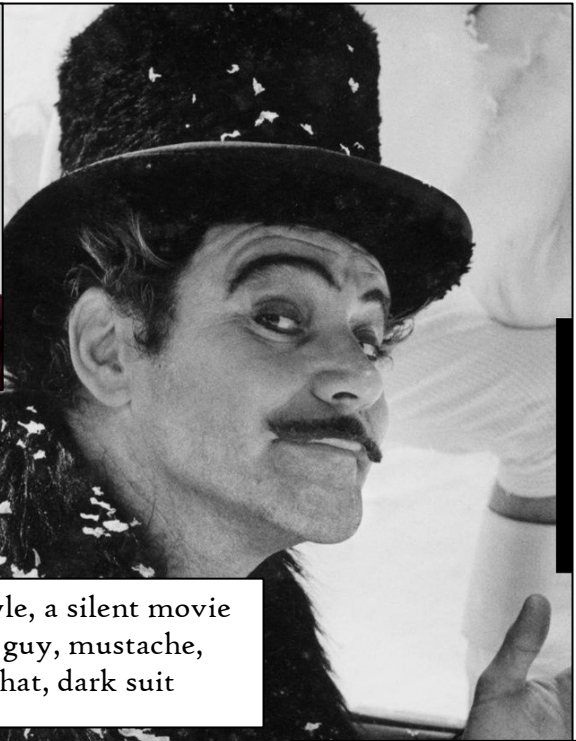
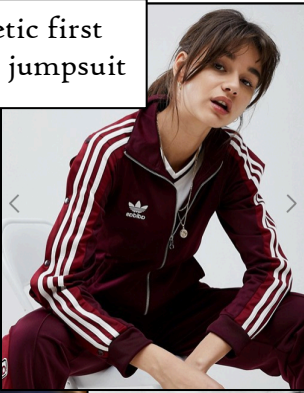


Window washer
Overalls, navy,

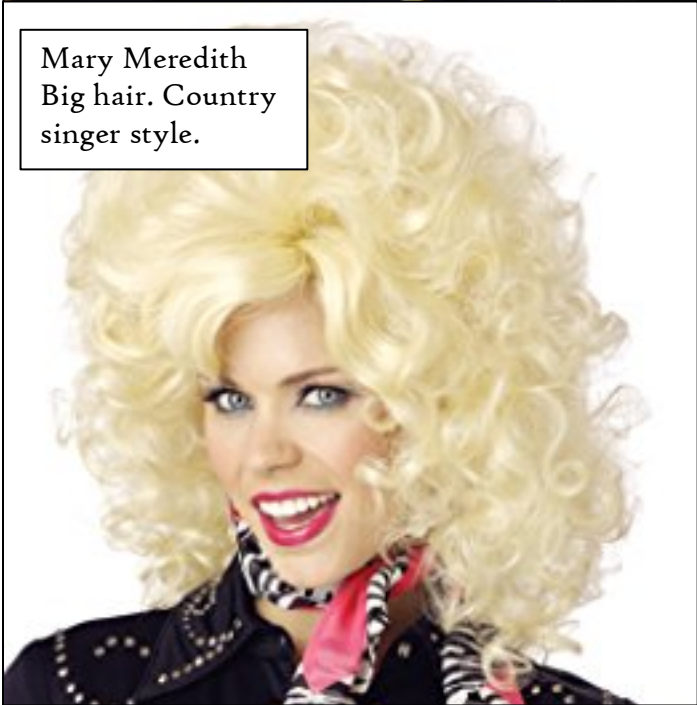


Abel murcott.
Glasses. Suit. Bowtie.

Claire. Athletic first
look. Classic jumpsuit



Coyle, a silent movie
bad guy, mustache,
top hat, dark suit



Mary Meredith
Big hair. Country
singer style.



Nick Adams and
mr. binney,
formal butlers



harry
Navy stylish ,
navy blazer,
white pants navy
hat?



Susan and erin
Both should match chef coats dark pants





Anne Maid costume, doesn't have to be this formal



Louie. Vest, cabbie hat.

Grandma and Mrs. Mountchessington Old woman style an old hat would be good too.



Mayor. A flag pin. Shirt. Tie.



Miriam and liddy Any version of suits



Rico Caribbean style and hat

Britney, Holly, Augusta and Georgina wear outfits one would normally wear to a party



La La Irving Wild look, almost gypsy like